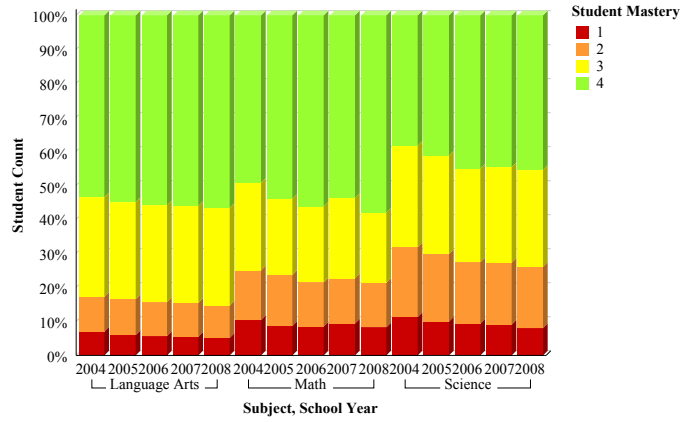
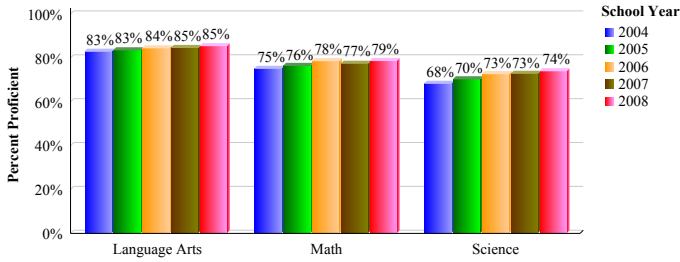


Alpine District Proficiency Summary



		2004			2005			2006			2007			2008			
		Student Count	Proficient Count	Percent Proficient	Student Count	Proficient Count	Percent Proficient	Student Count	Proficient Count	Percent Proficient	Student Count	Proficient Count	Percent Proficient	Student Count	Proficient Count	Percent Proficient	
01	Language Arts	Lang 1	4,166	3,405	82%	4,548	3,690	81%	4,872	4,011	82%	4,851	3,846	79%			
		Lang 2	4,120	3,322	81%	4,261	3,545	83%	4,615	3,791	82%	4,821	3,973	82%	5,001	4,135	83%
		Lang 3	4,151	3,348	81%	4,169	3,322	80%	4,297	3,517	82%	4,532	3,623	80%	4,952	3,993	81%
		Lang 4	3,812	3,120	82%	4,226	3,472	82%	4,251	3,570	84%	4,221	3,485	83%	4,648	3,840	83%
		Lang 5	3,840	3,087	80%	3,875	3,212	83%	4,264	3,548	83%	4,158	3,349	81%	4,359	3,491	80%
		Lang 6	3,880	3,222	83%	3,980	3,344	84%	3,879	3,336	86%	4,205	3,598	86%	4,248	3,582	84%
		Lang 7	3,779	3,209	85%	4,026	3,426	85%	4,042	3,515	87%	3,938	3,499	89%	4,392	3,819	87%
		Lang 8	3,782	3,219	85%	3,845	3,203	83%	4,061	3,413	84%	4,061	3,576	88%	4,035	3,639	90%
		Lang 9	3,601	3,030	84%	3,778	3,327	88%	3,876	3,400	88%	4,063	3,581	88%	4,169	3,703	89%
		Lang 10	3,509	2,959	84%	3,642	3,128	86%	3,710	3,171	85%	3,691	3,278	89%	4,087	3,700	91%
		Lang 11	3,005	2,546	85%	3,404	2,833	83%	3,329	2,850	86%	3,391	3,010	89%	3,552	3,171	89%
	Math	Math 1	4,162	3,262	78%	4,546	3,467	76%	4,886	3,945	81%	4,855	3,616	74%			
		Math 2	4,118	3,165	77%	4,259	3,351	79%	4,621	3,801	82%	4,828	3,867	80%	5,005	3,956	79%
		Math 3	4,151	3,223	78%	4,167	3,228	77%	4,308	3,347	78%	4,537	3,496	77%	4,959	3,856	78%
		Math 4	3,812	2,890	76%	4,222	3,277	78%	4,251	3,372	79%	4,231	3,239	77%	4,657	3,660	79%
		Math 5	3,841	2,905	76%	3,869	3,052	79%	4,265	3,396	80%	4,166	3,098	74%	4,368	3,312	76%
		Math 6	3,876	3,014	78%	3,975	3,115	78%	3,887	3,150	81%	4,209	3,418	81%	4,248	3,425	81%
		Math 7	390	170	44%	339	161	47%	444	240	54%	385	234	61%	414	249	60%
		PreAlgebra	4,902	3,449	70%	4,821	3,561	74%	4,698	3,612	77%	4,543	3,636	80%	4,779	3,936	82%
		Geometry	3,321	2,252	68%	3,634	2,684	74%	3,897	3,000	77%	3,836	2,948	77%	4,126	3,264	79%
Algebra	4,101	3,172	77%	4,625	3,456	75%	4,698	3,496	74%	4,957	3,791	76%	4,951	3,807	77%		
	Science	Sci 4	3,793	2,577	68%	4,174	2,926	70%	4,292	2,943	69%	4,231	2,889	68%	4,668	3,231	69%
		Sci 5	3,811	2,563	67%	3,822	2,663	70%	4,263	3,117	73%	4,153	2,893	70%	4,371	3,178	73%
		Sci 6	3,832	2,729	71%	3,949	2,911	74%	3,875	2,878	74%	4,190	3,136	75%	4,252	3,182	75%
		Sci 7 (1st)							1,589	1,156	73%	1,422	1,054	74%	1,153	776	67%
		Sci 7	3,715	2,658	72%	3,887	2,784	72%	2,399	1,865	78%	2,476	1,923	78%	3,212	2,592	81%
		Sci 8	3,709	2,623	71%	3,794	2,696	71%	4,043	3,102	77%	4,088	3,030	74%	4,017	3,151	78%
		Physics	1,499	762	51%	1,481	902	61%	1,636	1,059	65%	1,664	1,066	64%	1,580	1,039	66%
		Earth Sys	2,170	1,510	70%	2,328	1,658	71%	2,207	1,538	70%	2,315	1,743	75%	2,483	1,828	74%
		Biology	3,224	2,279	71%	3,671	2,720	74%	4,423	3,447	78%	4,316	3,482	81%	4,387	3,486	79%
		Chemistry	1,457	845	58%	1,510	833	55%	1,638	932	57%	1,618	946	58%	1,645	1,010	61%